

**DALLAS COUNTY
SECURITY AND
EMERGENCY MANAGEMENT**

What is EM/HS?

The process of preventing or mitigating threats and preparing for, responding to and recovering from an emergency.

Phases

- Prevention
 - Don't let bad things happen
- Mitigation
 - Minimize the harm that bad things can do
- Preparedness
 - Be ready for when bad things happen
- Response
 - Handle it when bad things happen
- Recovery
 - Get back to normal after bad things happen

Planning

- Meet Texas Advanced, Intermediate, Basic standards
- Establish sustainable planning cycle
 - 5 year cycle
 - Basic plan + Annexes + Appendices
- Document process used for planning
- Participate in Local/Regional planning
 - EM Advisory Panel
 - County EM Association
 - VOAD
 - MACC

OSEM Goals for EM/HS

- Provide for the safety of people, property, and the environment throughout Dallas County.
- Provide for the safety of county employees, property, and business processes.
- Provide for efficient use of countywide resources before, during, and after emergency and disaster events.
- Establish effective procedures for management of department and departmental responsibilities.
- Increase Dallas County's influence over local, state, and national emergency management policy decisions.

Who are we worried about?

- County Citizens and their property
- County Employees
- County Departments
- County Facilities
- Dallas County Municipalities
- Neighboring Counties
- Environment

All Hazards/All Disciplines

- Terrorism
- Tornado
- Flood
- Subsidence
- Thunderstorm
- Drought
- Winter Storm
- Biological
- Civil Disturbance
- Government
- First Responders
- Health and Medical
- Public Works
- Media
- Private Industry
- Voluntary Organizations
- Private Citizens

State Annexes

- Warning
- Communications
- Shelter/Mass Care
- Evacuation
- Public Info
- Resource Mgmt
- Human Services
- Health/Medical
- Transportation
- Donations Mgmt

Food Bank Specific Issues

- Planning
 - Internal
 - External
- Funding
 - Grants
 - Donations
- Responding
 - Fitting in
 - Maximizing Impact

Multi Agency Coordination

- Ensure that each agency provides
 - Situational awareness
 - Resource status information
- Establish priorities among incidents and/or area commands
- Acquire and allocate resources
- Anticipate future resource requirements
- Resolve policy issues
- Provide strategic coordination

NIMS: What It Is / What It's Not

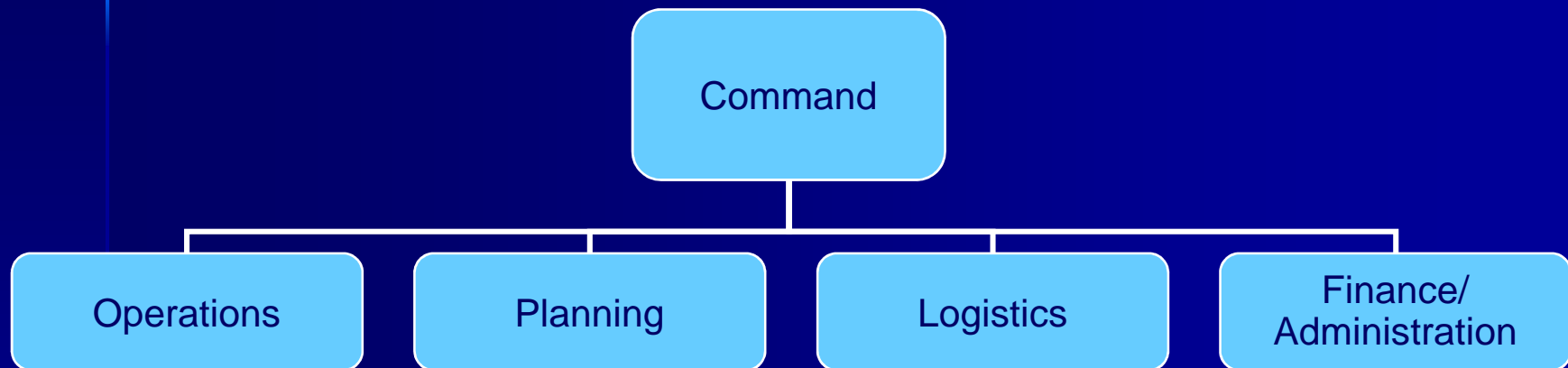
NIMS is...

- Core set of:
 - Doctrine
 - Concepts
 - Principles
 - Terminology
 - Organizational processes
- Applicable to all hazards

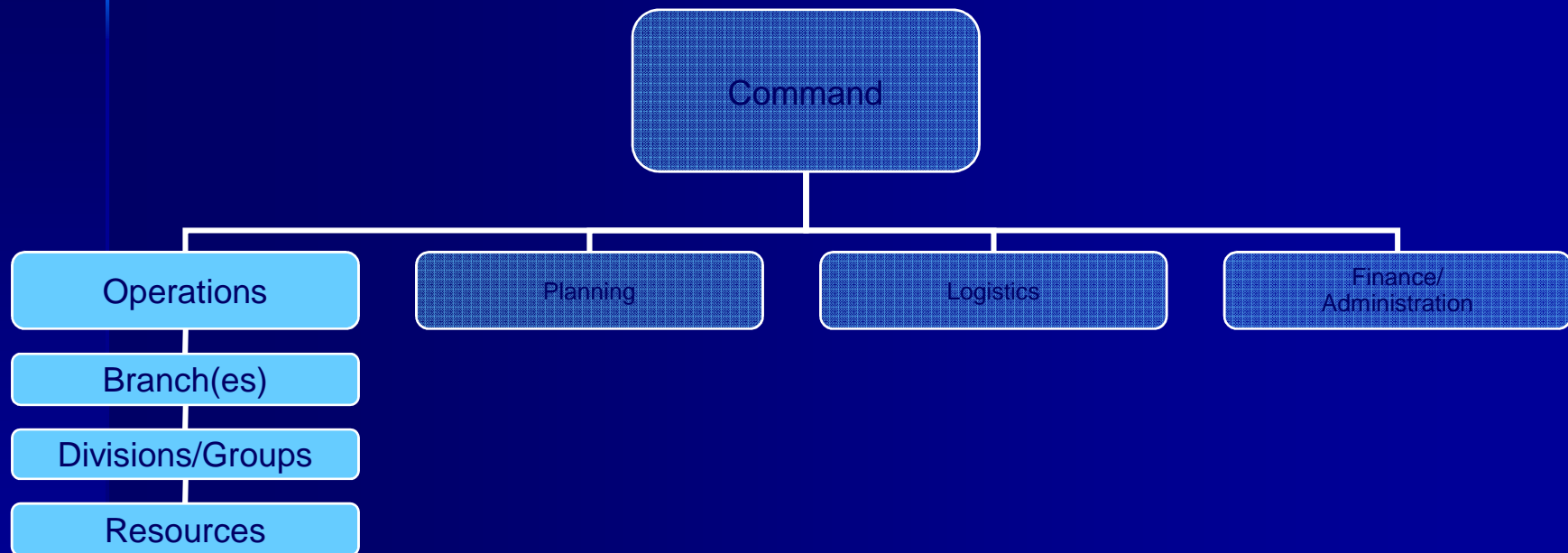
NIMS is not...

- An operational incident management plan
- A resource allocation plan
- A terrorism / WMD-specific plan
- Designed to address international events

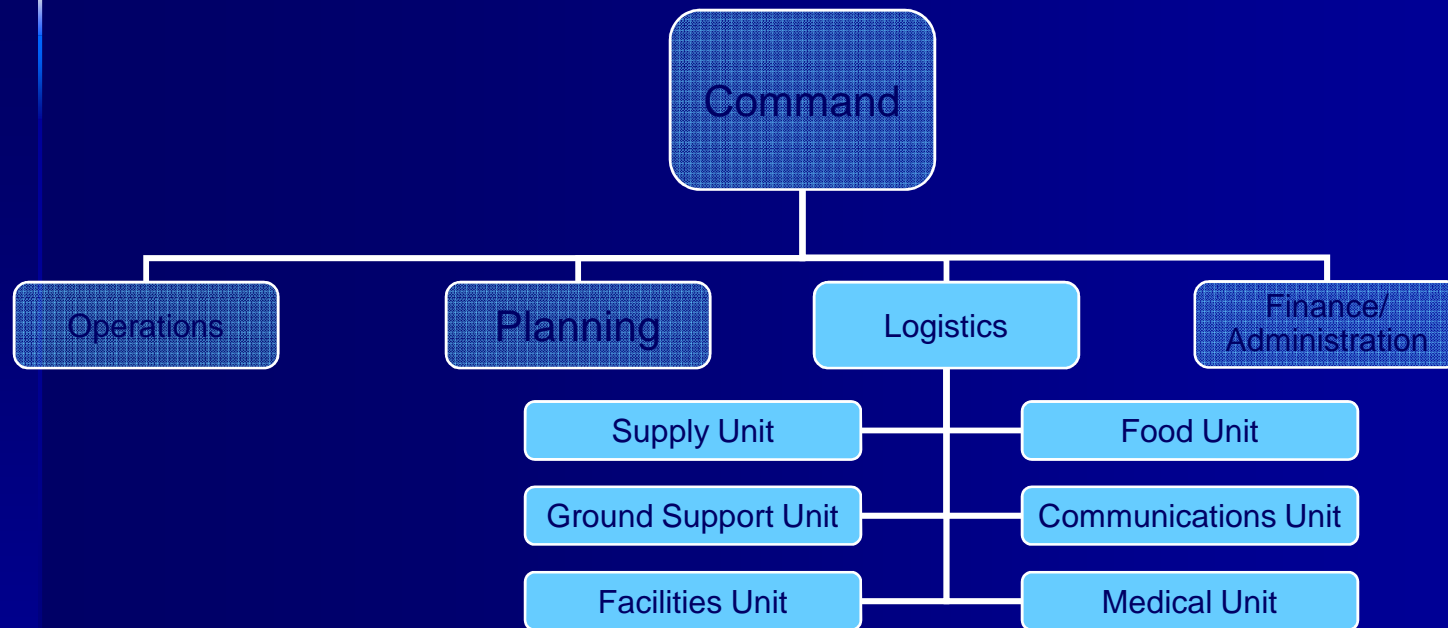
ICS Command and General Staff



Operations Section



Logistics Section



Other Key Areas

- Education
 - FEMA-Independent Study
 - ARC-Home and Family Preparedness
 - DEM/EMI courses
- Grants
 - Needs
 - Coordination
- Volunteers
 - BSA-Merit Badge for HS/EM

**What can we do to
assist you?**

Contact Information

Dallas County Office of Security and Emergency Management

Records Building

509 Main Street, Suite 305

Dallas, Texas 75202

214-653-7980 office

214-653-7988 fax

rrobinson@dallascounty.org

cyjacobs@dallascounty.org